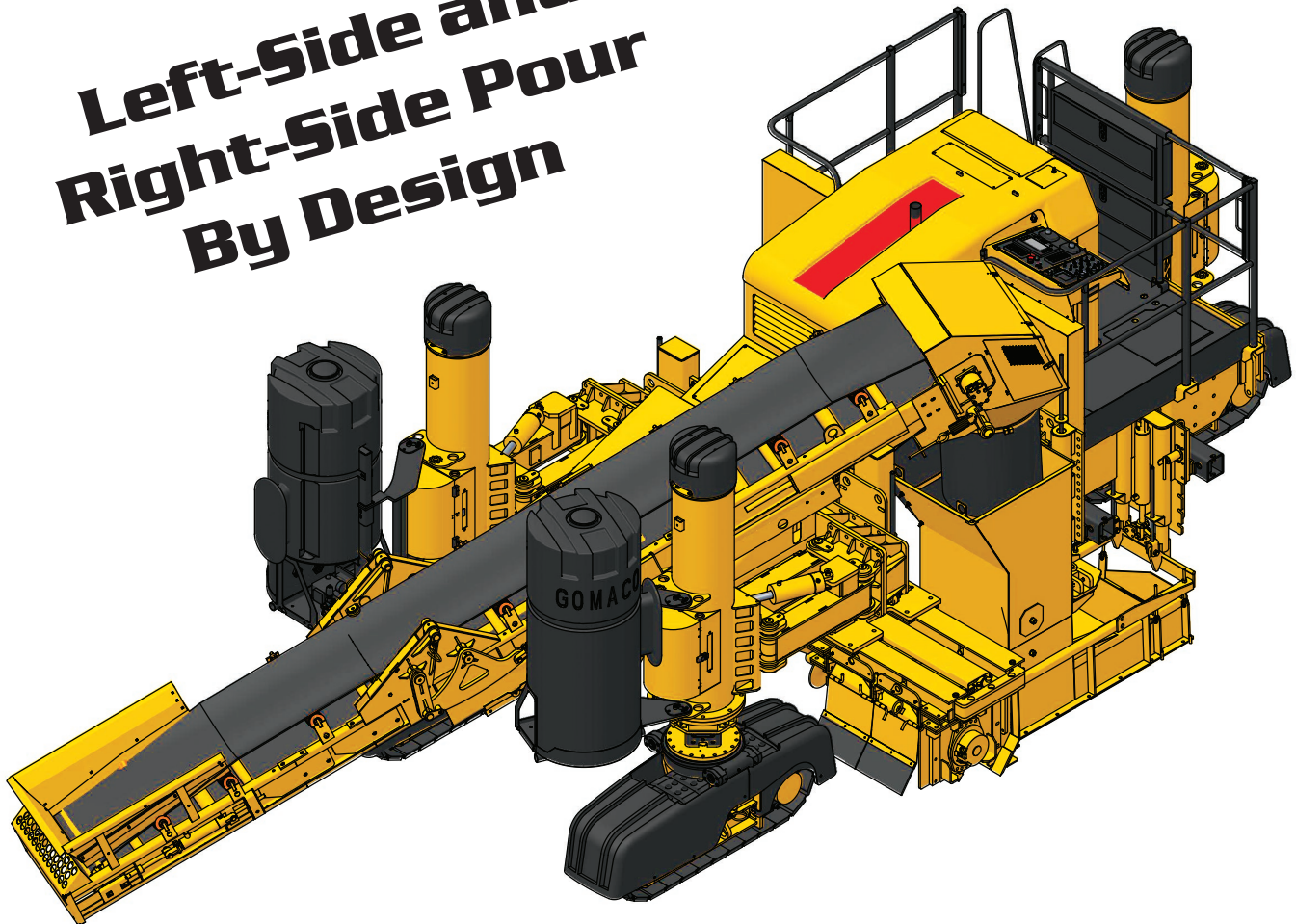


NEW 3300

The World's Most Intelligent Multi-Application Paver

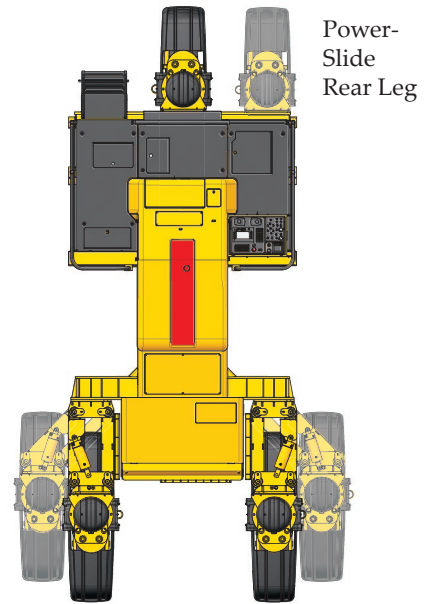
**Left-Side and
Right-Side Pour
By Design**



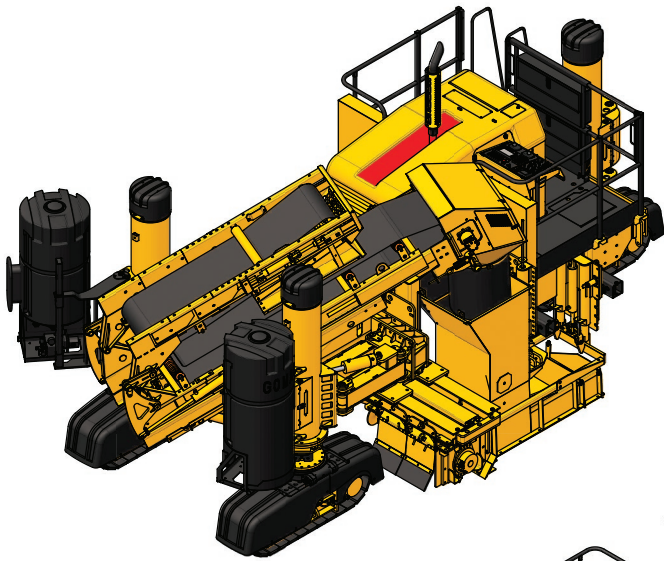
The Worldwide Leader in Concrete Paving Technology

3300 Slipform Paver

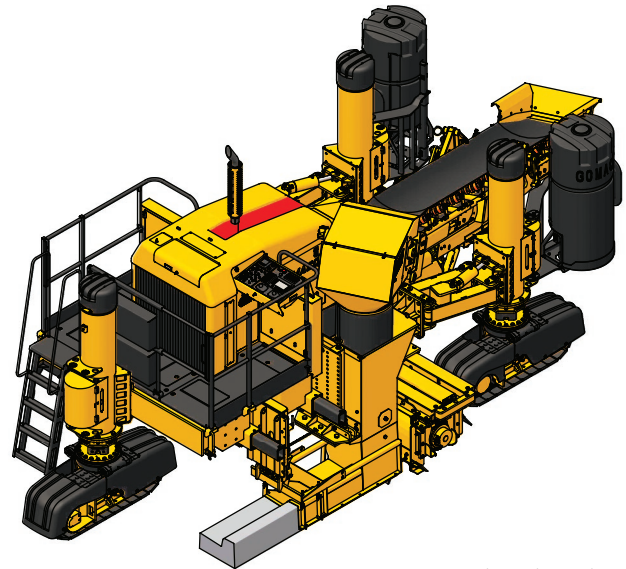
- The World's Most Intelligent Multi-Application Paver
 - Smart Front Pivot Arms for Leg Positioning Reference for G+® Control
 - Smart Power-Slide on Rear Leg for Positioning Reference for G+ Control
 - Extreme Steering Capabilities with Hydraulic, Radial Rotation of Tracks
 - Sensored Radial Steering on All Tracks for Automatic Directional Control
 - Smart Telescoping Mold for G+ Control
 - G+ Connect™ for 3D Guidance Systems and Accessories
- Right-Side and Left-Side Pour By Design
 - Symmetrical Design for Paving on Either Side
 - U-Shaped Operator's Platform for Right/Left Side Operation and Ultimate Operator Visibility
 - Sliding Console for Operating Off Either Side and Locks Out of Sight When Not in Use
 - 20 foot (6.1 m) Conveyor with Four-Way Hydraulic Positioning for Loading the Hopper on Right/Left Side
 - Folding Conveyor Reduces Transport Length.
- GOMACO Hook-and-Go Mold Mounting System for Quick Mold Changes
- All-Track Steering for Tight Radius Work and Job-Site Mobility
- Tier 4 Ready
- G+ Quiet Running Technology
- Isolated Operator's Platform for Operator Comfort



The two front legs are mounted on pivot arms with latitudinal outward and longitudinal rearward movement on parallelogram style pivot arm.



The GOMACO 3300 features a folding conveyor for transporting.



GOMACO's 3300 with right-side curb and gutter mold.



GOMACO's 3300 with right-side barrier mold.

Introductory Specifications

ENGINE

Consult for options available.

SERVICE CAPACITIES

Fuel reservoir: 70 gal. (265 L).

Hydraulic oil reservoir: 89 gal. (337 L).

AUTOMATED CONTROL SYSTEM

Type: Electronic-over-hydraulic.

Controls: GOMACO's exclusive G+ control system features self-diagnostics for grade and steering and smart steer controls for paving accuracy and ease in operation. It features multi-language, metric or imperial settings, and a 6.5 in. (165 mm) anti-glare display screen.

Control indicators: Color graphical performance indicators allow operator to monitor control signals as machine follows stringline or 3D commands.

WATER SYSTEM

Type: On-board water system.

Capacity: One 100 gal. (379 L) high-pressure water tanks with trigger gun control and adjustable pressure unloaded for up to 2000 psi.

SLIPFORM MOLD

Curb and gutter mold: One mold standard up to 24 in. (610 mm) wide. Optional molds available for curb and gutter, barrier, parapet, and sidewalk.

VIBRATORS

Type: Hydraulically powered, motor-in-head, variable speed, independently controlled, and synchronized with machine movement.

Quantity: Two vibrators and four circuits.

MOLD DRAWBAR AND HOLD-DOWN ASSEMBLY

Hydraulic lift: 18 in. (457 mm) pressure-compensated hydraulic vertical adjustment with the capability to adjust up to 26 in. (660 mm), with 6 in. (152 mm) manual vertical adjustment.

Sideshift: 36 in. (914 mm) maximum hydraulic sideshift.

SUBGRADE TRIMMER (sectionalized)

Sectionalized trimmer: Internal hydraulic drive system and 24 in. (610 mm) diameter trimming wheel.

Trimmer wheel rotation: Upward cut.

Width: 30 in. (762 mm) to 66 in. (1676 mm) sectionalized trimmerhead with hydraulic sideshift capability. Right-hand discharge standard.

Sideshift distance: 48 in. (1219 mm) maximum hydraulic sideshift.

Hydraulic lift trimmer: 18 in. (457 mm) hydraulic vertical adjustment, with 6 in. (152 mm) manual vertical adjustment.

Direct-drive trimmerhead: Trimmerhead is directly driven with a radial piston hydraulic motor which provides more torque for more power.

CONVEYOR

Type: Hydraulically powered, reversible with charging hopper. Pivot mount conveyor with hydraulic lift and positioning.

Length: 20 ft. (6.1 m) folding conveyor with hydraulic lift, shift, and pivot.

Width: 24 in. (610 mm).

Belt speed: Variable up to 254 fpm (77.4 mpm).

Belt wiper: Features segmented blades mounted on individual cushions. This allows the cleaning tips to conform to the centers of the belt for constant contact without the need for constant adjustment.

Conveyor mount: Features 42 in. (1067 mm) hydraulic slide adjustment with 6 in. (152 mm) hydraulic tilt cylinder and hydraulic pivoting mount (slide and tilt) for negotiating discharge from the ready-mix truck and negotiating grade variations. This allows truck

positioning to the front or the side of the machine. Hydraulically powered mount controls conveyor slope.

Hopper: Designed for more concrete capacity to allow slipforming a complete radius without waiting for concrete delivery.

TRACK SYSTEM

Type: Three hydraulically powered, gear-driven crawler tracks.

Overall track length: 5.1 ft. (1.6 m). 6 ft. (1.83 m) with fender.

Track pad width: 11.8 in. (300 mm).

Track speed: Variable up to 49.5 fpm (15.1 mpm); auxiliary variable up to 131 fpm (39.93 mpm).

Leg height adjustment: Each track has 36 in. (914 mm) hydraulic adjustment and an additional manual adjustment of 8 in. (203 mm).

Front legs: The two front legs are mounted on pivot arms with up to 16.6 in. (422 mm) latitudinal outward and 5 in. (127 mm) longitudinal rearward movement on parallelogram style pivot arm.

Power-slide leg for positioning rear track: Hydraulically controlled, allows up to 71 in. (1803 mm) lateral track movement.

SHIPPING DIMENSIONS

Overall length with folded conveyor: 25.07 ft. (7.64 m).

Overall length without conveyor: 22.32 ft. (6.80 m).

Overall height: 9.4 ft. (2.87 m).

Overall width: 8.33 ft. (2.54 m).

WEIGHT (approximate)

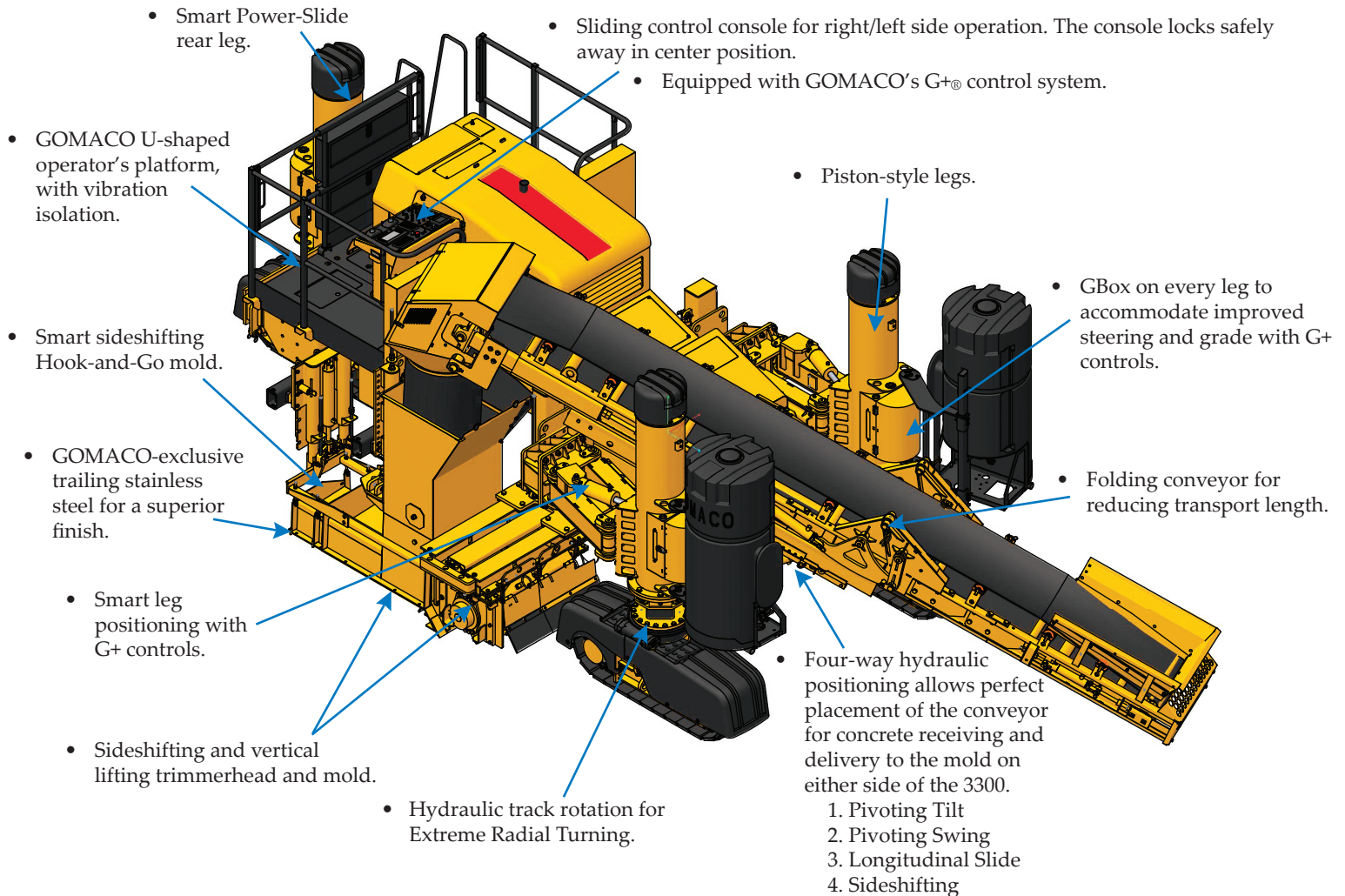
28,000 lbs. (12,701 kg). Weight can vary depending on size of mold and options.

Note: Transport and operational weights and dimensions are variable, depending on machine options.

OPTIONS

- Barrier/parapet sidemount attachment. Maximum slipforming height of 50 in. (1270 mm).
- Guillotine-style curb depressor has a straight blade that enters the face of the curb. Hydraulically powered, for use on curb and gutter molds while slipforming through driveways. Can be changed to other molds if they are slotted and clamped to accept the driveway cutout.
- California-style curb depressor has a curved blade that enters the face of the curb. Hydraulically powered, for use on curb and gutter molds while slipforming through driveways.
- Hydraulic pressure-compensated sideplates.
- Additional vibrators and mounts.
- Additional vibrator circuits and controls.
- Left-hand discharge trimmerhead.
- Trimmerhead insert sections of 12 in. (305 mm), 18 in. (457 mm), 24 in. (610 mm), and 30 in. (762 mm) widths are available for trimmerhead width to 66 in. (1676 mm) maximum.
- Curb and gutter molds will be built to customer specifications. Various mold options are available.
- Polyurethane track pads, 81 pads required.
- Radius wheels for use on radius work, saving time on stringline set-up.
- 3D package for stringless guidance.
- Other options are available to customize the machine to accommodate applications and customer needs.

- Right/left side pour by design.
- Emergency stop buttons are located at strategic areas around the machine.



Manufactured under one or more of the following U.S. or foreign patents: 5,924,817; 5,941,659; 6,099,204; 6,450,048; CA2,211,331; 7,044,680; 7,284,472; 7,517,171; 7,845,878; 7,850,395; CA2,864,902; CA2,591,177; 8,855,967; 8,682,622; 9,051,696; and patents pending.

GOMACO and G+ are registered trademarks of GOMACO Corporation.

GOMACO Corporation reserves the right to make improvements in design, material, and/or changes in specifications at any time without notice and without incurring any obligation related to such changes. Performance data is based on averages and may vary from machine to machine.

Printed in U.S.A. © 2015 (12 GOMACO Corp.)

-- DESIGNED FOR SAFETY --

The 3300 is carefully designed to give years of dependable and safe service. The emergency stop buttons are on the operator's console and on the corners of the machine, which are easily accessible from the ground level. Another safety feature is a backup alarm, which is designed to alert personnel around the machine when the tracks are set to operate in reverse. Other safety features include track guards, warning decals, operator horn, an operator's manual, and a safety manual. GOMACO machines are also designed to provide the operator with excellent visibility over the entire paving operation.



The Worldwide Leader in Concrete Paving Technology

Worldwide Headquarters
GOMACO Corporation
PO Box 151
Ida Grove, IA USA 51445
Ph: 1-712-364-3347
www.gomaco.com
E-mail: info@gomaco.com

European Headquarters
GOMACO International Ltd.
Units 14 & 15
Avenue One, Station Lane
Witney, Oxon, OX28 4XZ, England
Ph: 44-1993-705100
E-mail: pavinguk@gomaco.com



GOMACO Corporation's Quality Management System Is
ISO 9001 Certified By The American Systems Registrar.

Quality Policy: We Shall Meet Or
Exceed Our Customers' Expectations.

